

KADRA

TRACKLIGHT



Kadra 4x6 V2 - 10126

Tracklight

ALPANI



Track mounted fully adjustable tracklight complete with LED module, lens and driver



Materials

Housing made of aluminium, lens made from PMMA, track adaptor made from thermoplastic

Light Source

As standard; CRI80 and CRI90 in 2700, 3000, 4000 and 5000K

Beam Angle

High efficient optic with narrow, medium and wide distribution

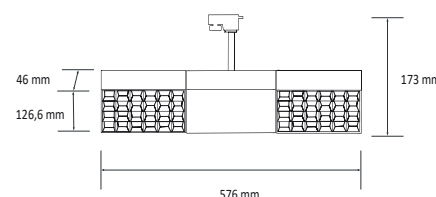
Colors

As standard; White, Black and Grey
Special RAL colours available on request
Different color options for antiglare mask available on request

Operating Conditions

Designed with best possible shape to provide optimal heat dissipation both on LED and Driver to ensure long lifetime

Technical Drawing



Warranty

All components are provided with 5 year limited guarantee
A qualified electrician must ensure proper installation of the product

Installation

Track

Code	Power - Lumen*	CRI	Kelvin	Beam Angle	Color	Control
10126	76W - 7448lm	80	2700	20°	White	On-Off
	56W - 5488lm	90	3000	35°	Black	Dali
	32W - 3136lm		4000	45°	Grey	
			5000		Ral	

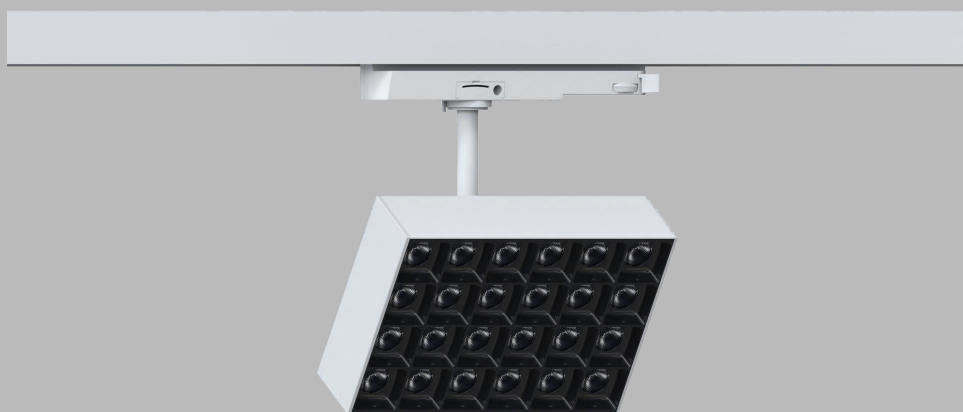
*Calculated with CRI80 - 4000K



Kadra 4x6 - 10125

Tracklight

ALPANI



Track mounted fully adjustable tracklight complete with LED module, lens and driver



Materials

Housing made of aluminium, lens made from PMMA, track adaptor made from thermoplastic

Light Source

As standard; CRI80 and CRI90 in 2700, 3000, 4000 and 5000K

Beam Angle

High efficient optic with narrow, medium and wide distribution

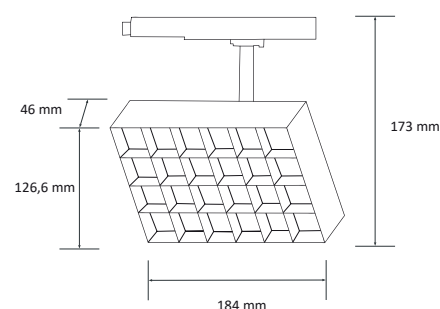
Colors

As standard; White, Black and Grey
Special RAL colours available on request
Different color options for antiglare mask available on request

Operating Conditions

Designed with best possible shape to provide optimal heat dissipation both on LED and Driver to ensure long lifetime

Technical Drawing



Warranty

All components are provided with 5 year limited guarantee
A qualified electrician must ensure proper installation of the product

Installation

Track

Code	Power - Lumen*	CRI	Kelvin	Beam Angle	Color	Control
10125	38W - 3724lm	80	2700	20°	White	On-Off
	28W - 2744lm	90	3000	35°	Black	Dali
	16W - 1568lm		4000	45°	Grey	
			5000		Ral	

*Calculated with CRI80 - 4000K



Kadra 4x3 V2 - 10124

Tracklight

ALPANI



Track mounted fully adjustable tracklight complete with LED module, lens and driver



Materials

Housing made of aluminium, lens made from PMMA, track adaptor made from thermoplastic

Light Source

As standard; CRI80 and CRI90 in 2700, 3000, 4000 and 5000K

Beam Angle

High efficient optic with narrow, medium and wide distribution

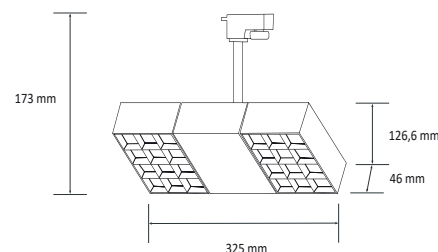
Colors

As standard; White, Black and Grey
Special RAL colours available on request
Different color options for antiglare mask available on request

Operating Conditions

Designed with best possible shape to provide optimal heat dissipation both on LED and Driver to ensure long lifetime

Technical Drawing



Warranty

All components are provided with 5 year limited guarantee
A qualified electrician must ensure proper installation of the product

Installation

Track

Code	Power - Lumen*	CRI	Kelvin	Beam Angle	Color	Control
10124	38W - 3724lm	80	2700	20°	White	On-Off
	28W - 2744lm	90	3000	35°	Black	Dali
	16W - 1568lm		4000	45°	Grey	
			5000		Ral	

*Calculated with CRI80 - 4000K

Kadra 4x3 - 10123

Tracklight

ALPANI



Track mounted fully adjustable tracklight complete with LED module, lens and driver



Materials

Housing made of aluminium, lens made from PMMA, track adaptor made from thermoplastic

Light Source

As standard; CRI80 and CRI90 in 2700, 3000, 4000 and 5000K

Beam Angle

High efficient optic with narrow, medium and wide distribution

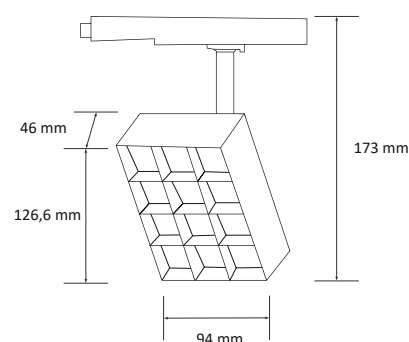
Colors

As standard; White, Black and Grey
Special RAL colours available on request
Different color options for antiglare mask available on request

Operating Conditions

Designed with best possible shape to provide optimal heat dissipation both on LED and Driver to ensure long lifetime

Technical Drawing



Warranty

All components are provided with 5 year limited guarantee
A qualified electrician must ensure proper installation of the product

Installation

Track

Code	Power - Lumen*	CRI	Kelvin	Beam Angle	Color	Control
10123	19W - 1862lm	80	2700	20°	White	On-Off
	14W - 1372lm	90	3000	35°	Black	Dali
	8W - 784lm		4000	45°	Grey	
			5000		Ral	

*Calculated with CRI80 - 4000K

